

# MTX ONE

## STACKING PLAN AND AVAILABILITIES



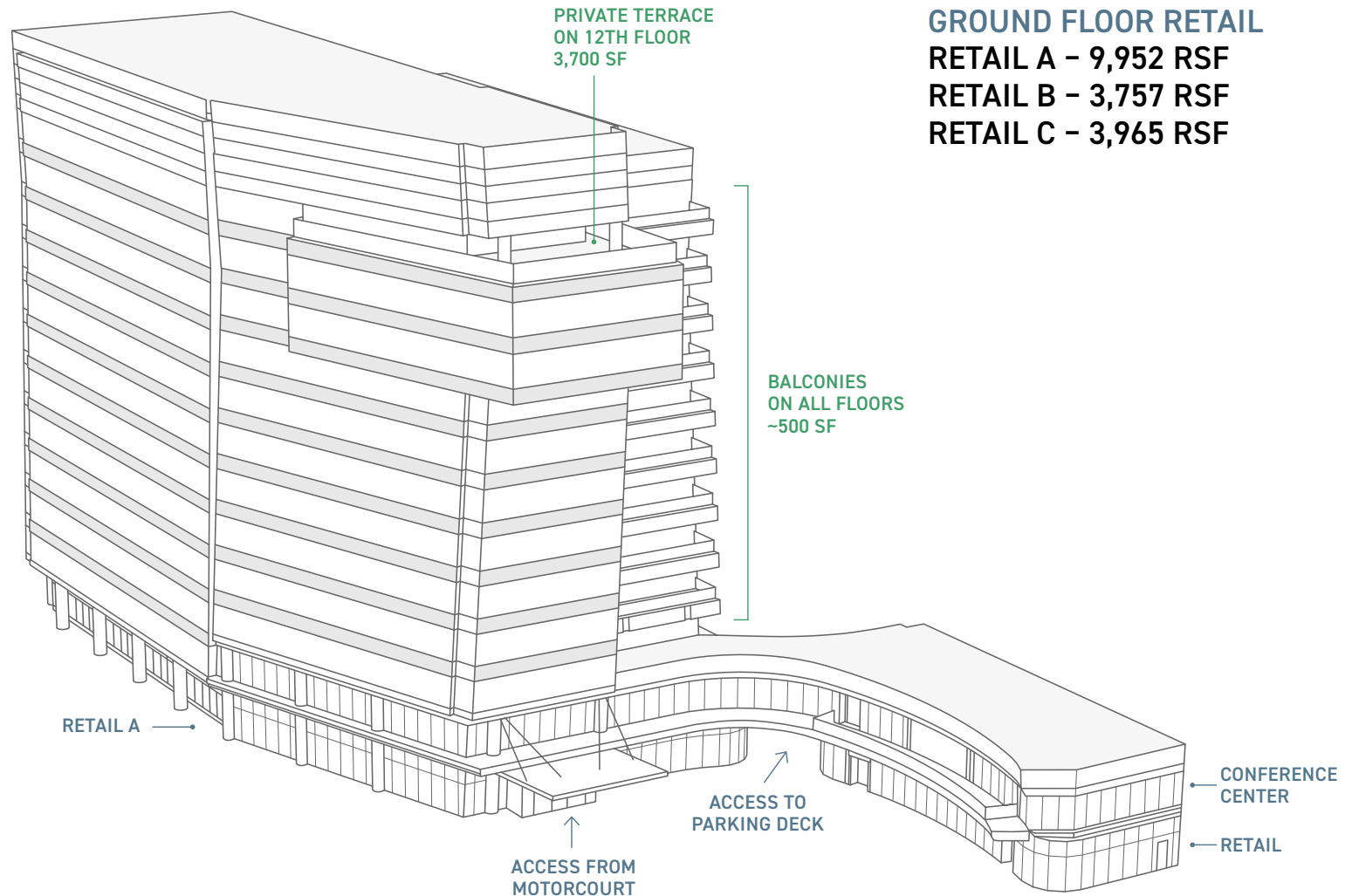
ED PULLIAM  
Executive Vice President  
[ed.pulliam@cbre-raleigh.com](mailto:ed.pulliam@cbre-raleigh.com)  
+1 919 831 8237

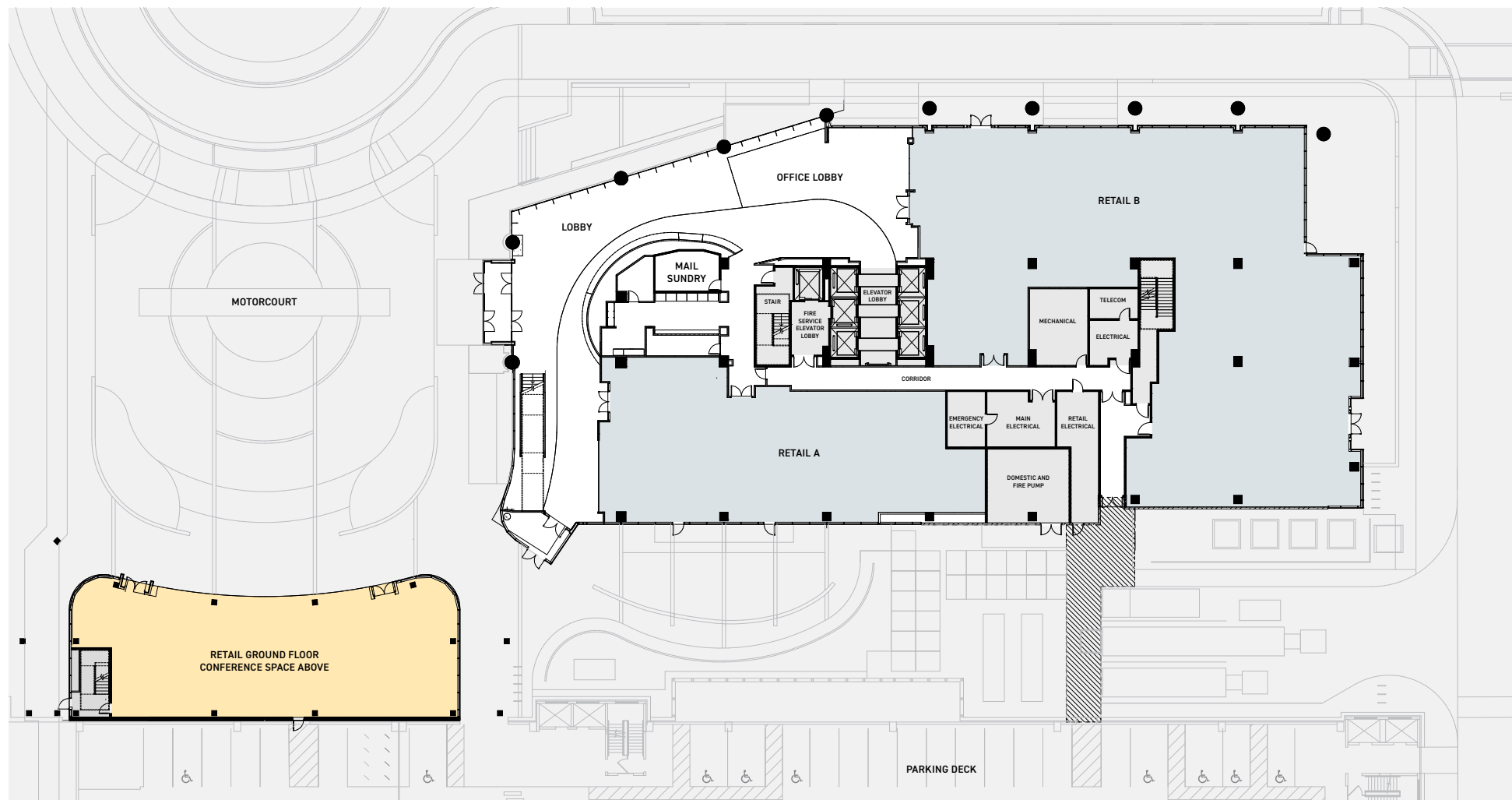
JOHN BREWER  
Executive Vice President  
[john.brewer@cbre-raleigh.com](mailto:john.brewer@cbre-raleigh.com)  
+1 919 831 8214



## STACKING PLAN AND AVAILABILITIES

FL	RENTABLE AREA	
12TH	31,392 RSF	See plan →
11TH	31,294 RSF	
10TH	31,305 RSF	
9TH	29,702 RSF	Typical plan →
8TH	29,664 RSF	Typical plan →
7TH	29,624 RSF	Typical plan →
6TH	29,586 RSF	Typical plan →
5TH	29,547 RSF	Typical plan →
4TH	29,518 RSF	Typical plan →
3RD	29,627 RSF	Typical plan →
2ND	18,492 RSF	
GROUND		See plan →
CONFERENCE CENTER		See plan →
TEST FITS		
	Single Tenant →	
	Multi Tenant →	







## CONFERENCE CENTER

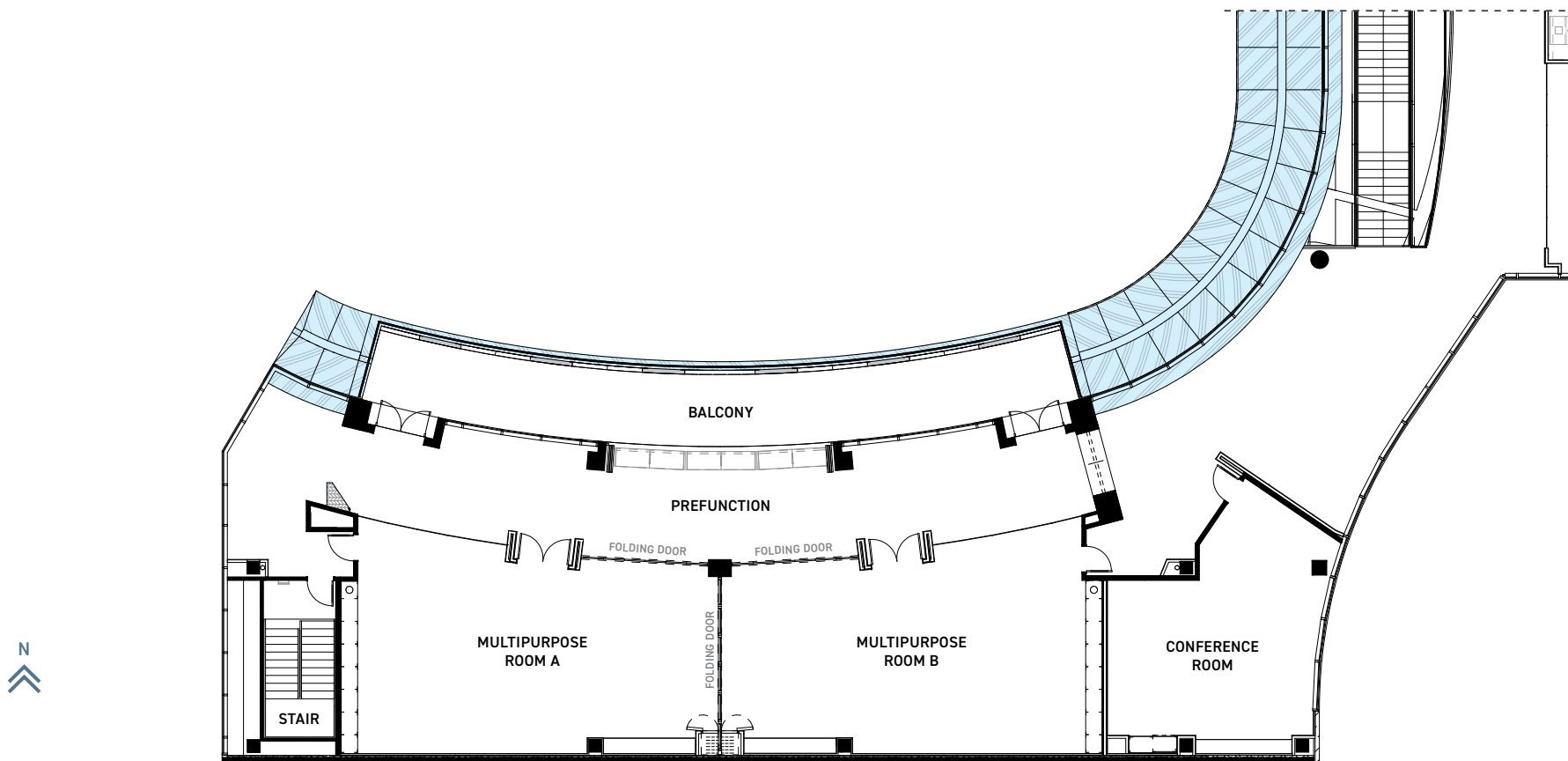
ROOM A - 1,053 SF

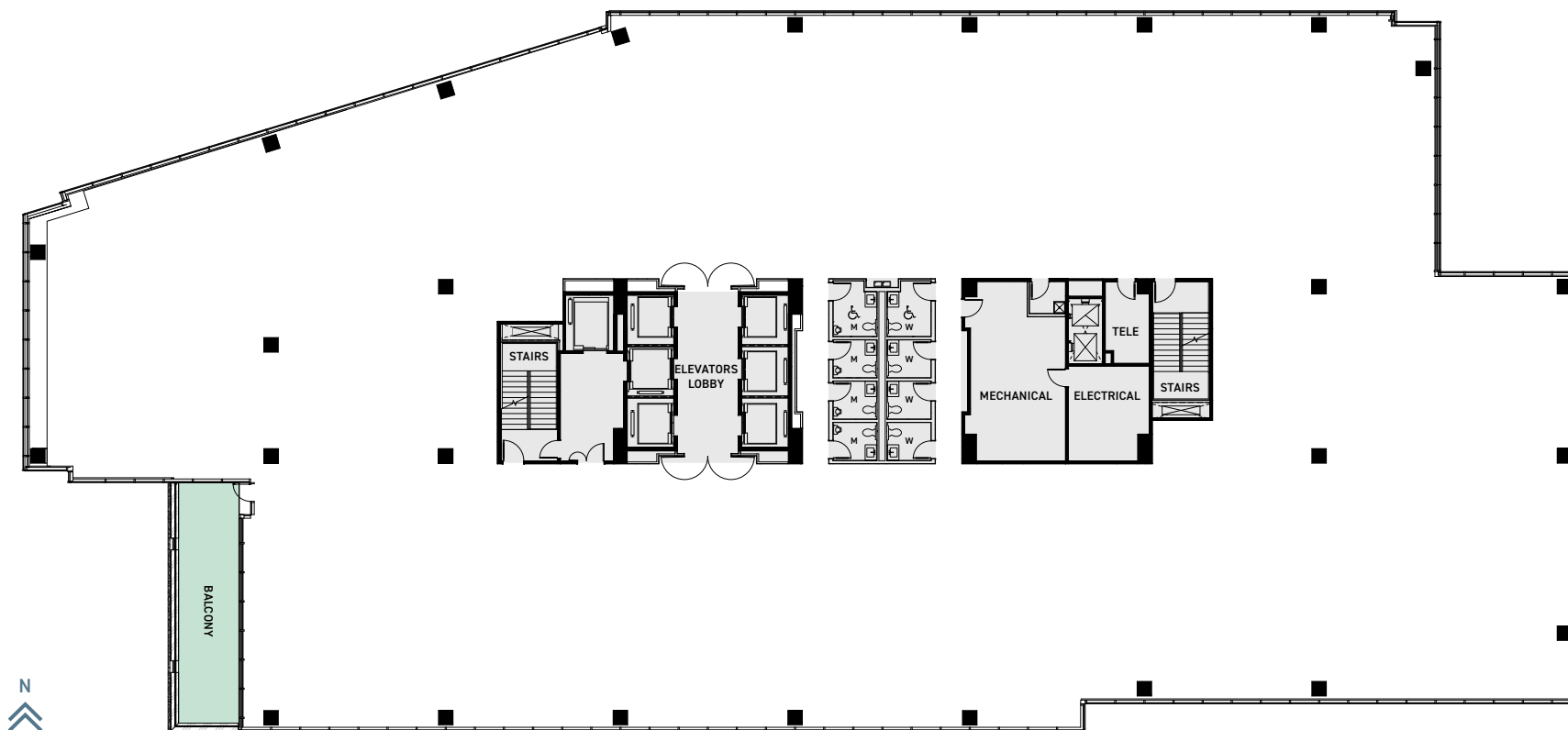
ROOM B - 1,053 SF

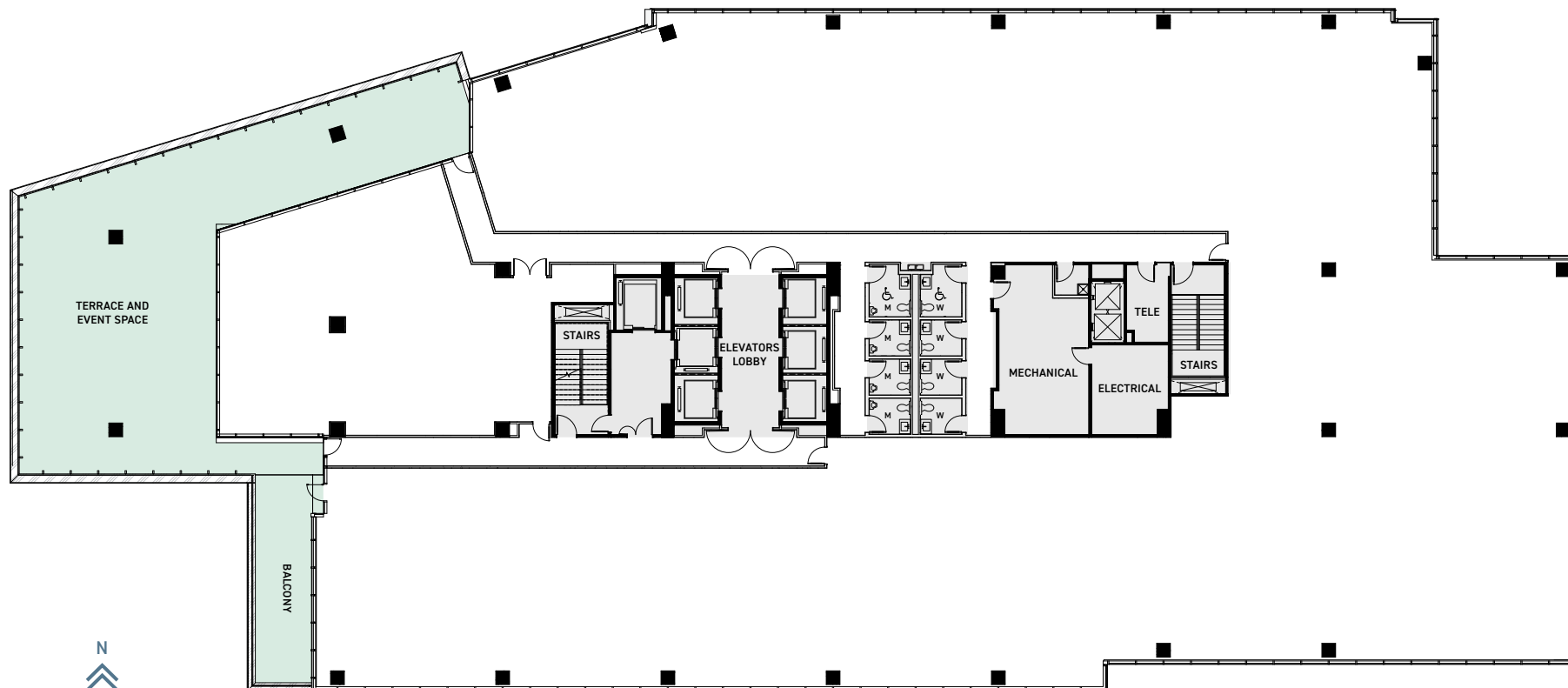
CONFERENCE ROOM - 615 SF

BACK TO  
STACKING PLAN →

MTX ONE ↗







- SOCIALLY DISTANT LAYOUT
- TRADITIONAL LAYOUT
- BALCONY
- PANTRY

BACK TO  
STACKING PLAN →



